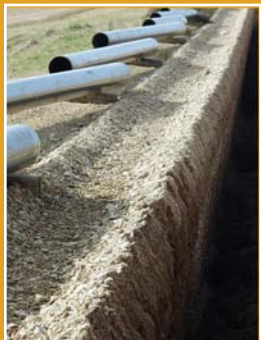


Oil and Gas Success Stories with WennSoft Solutions





**Job Cost
since 1998**

For more information about this and other solutions call Steve Payne at spayne@bdo.ca, or T: 416-525-1762.

Company Greatly Improves Method of Capturing Job Information

Since 1981, Petrochemical Services, Inc., tank cleaning and waste management specialists, has provided the safest and the most cost-effective solutions to the oil and gas industry's most difficult cleaning and environmental challenges. The business has grown to include turn-key services for product change, line cleaning, platform abandonment and more. PSI covers the Western Hemisphere, with additional installations in Argentina, Saudi Arabia and the former Soviet Union.

PSI has outpaced its competition in the amount of detailed job cost information it is able to gather. Combining everything into a Microsoft Office® Excel file, and using WennSoft Job Cost PSI staff operate more efficiently while capturing every aspect of a job. This allows them to produce detailed reports and invoices in record time, giving them a competitive advantage in a very competitive industry.

“WennSoft has helped us streamline our internal efforts. We keep up to date on projects and ahead of the game.”

Donna Rachal, vice president, finance
Petrochemical Services, Inc.

SITUATION OVERVIEW

Profile	Private company with 85 employees
Solution	WennSoft Job Cost and Microsoft® Dynamics™ GP
Challenge	Gulf Coast firm needed to capture job site and office information in one solution to eliminate duplication of efforts.
Benefits	Information is shared among all parties and detailed, accurate billing results in timely invoicing.



People • Process • Product
Integration By Design

5355 S. Moorland Rd. New Berlin WI 53151
Phone: (262) 821-4100 Fax: (262) 821-3838 E-mail: info@wennsoft.com, www.wennsoft.com



BDO Dunwoody LLP
Chartered Accountants
and Advisors

Stephen Payne, WennSoft Practice Leader
spayne@bdo.ca, T: 416-525-1762
Canada

BDO Dunwoody LLP
Solutions
www.bdo.ca